

Current Events Project

By: Aleriane D

Historical Significance:

I don't know if I understood the question quite properly but to me I feel that one part that may be missed is how much time that family's ended up having to spend together and actually getting closer. At least that is for my family, during this whole incident my family has gotten closer and we've spent more time together. It really has helped out a bit, my brothers, mom and I have spent a few nights together just playing bored games and hanging out a bit. Which has been quite a bit of fun.



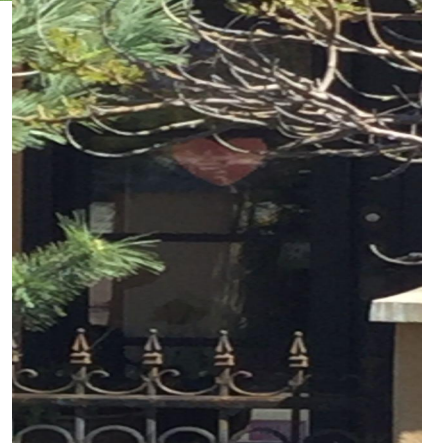
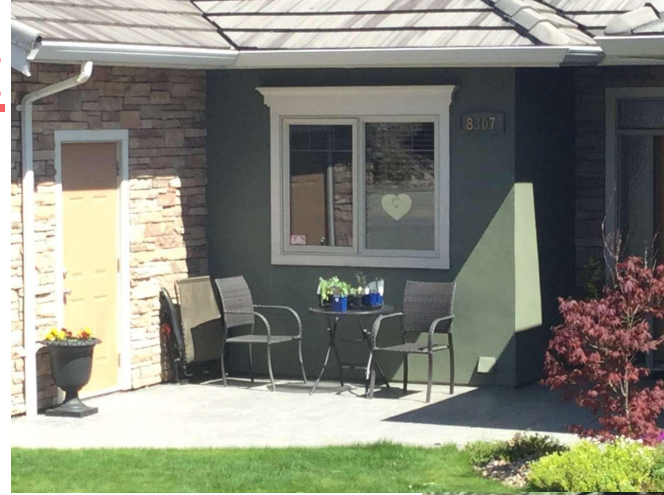
Continuity and Change:

For my mom and me we weren't expecting for the parks to shut down. I don't quite know why but when I originally heard that covid had broken out I didn't think that the parks would be closing down. Though yes the more I think of it the more i believe it was a good choice because of how many germs manifest in parks with all the kids that like climbing around on all the play place stuff. It was just a bit unexpected in my opinion originally.



Historical Perspective:

These are pictures of hearts that people have been putting up in their homes to tell others that they are not alone from my understandings. Looking it up it shows that it has spread quite a bit of warmth and reassurance to lots of people. From the research I did it was originally started in some town in BC but has now spread world wide which I think is such an amazing thing. For such a simple act it really has sent a very amazing message to everyone everywhere.



Cause and Consequence:

Since before the pandemic started my family was planning on extending the pub and as unfortunate as this pandemic is it has giving us a very good opportunity to extend it while it's shut down. Therefore as sad as this pandemic is it has been giving other businesses as well chances to upgrade their own materials. I was kind of expecting these types of things to happen because of the pandemic and a bunch of businesses getting shut down.

